

## All'incrocio dei generi

Anna Nezhnaya è un'artista che realizza progetti in diversi generi – pittura e grafica, scenografia e costumi per teatro, show e circo, design e stampa.

Lei è la principale artista del progetto “Les Saisons Russes”, dedicata alla celebre associazione “Il mondo dell' arte” e “Balletti Russi” di cui la prima presentazione risale al 1993 al Teatro Mariinsky di San Pietroburgo e successivamente presentata anche al teatro di Champs Elysees, Palais des Festivals de Cannes in Francia, London Coliseum Theatre. Inoltre lo spettacolo ha avuto luogo pure sul palcoscenico del Teatro dell'Opera di Roma sotto la direzione di Carla Fracci.

Anna è stata insignita dell'onorificenza di Sergei Diaghilev ed è una vincitrice del premio professionale “Showtex”.

Opere e balletti, concerti e spettacoli, eventi pubblici e privati, circhi erano ideati e presentati sui palcoscenici di molti teatri, sale da concerto, sale congressi dell'hotel e stadi sportivi in Russia e in Europa. L'artista ha creato scenografie, costumi da palcoscenico e video d'animazione per le leggende di lirica così come Montserrat Caballe, Galina Vishnevskaya, la prima ballerina del Teatro alla Scala Svetlana Zakharova, solisti del Bolshoi Theatre, cantante classico Ljuba Kazarnovskaya, il coreografo inglese Wayne Eagling, il pianista Denis Matsuev, Festival di danza in memoria di Rudolf Nureyev e Chaliapin Opera Festival. Inoltre, sono stati creati palcoscenici e decorazioni per concerti di alcuni cantanti pop italiani come Al Bano e “Ricchi e Poveri”. Anna progetta design per note aziende e per centri commerciali così come Bosco di Ciliegi, Mercury, Lladro, Cartier, Blue Elephant, The Ritz Carlton, Land Rover, Fiat.

L'artista ha una sua idea creativa e lascia le opere create vivere di vita propria anche dopo il completamento del progetto, per lei ogni schizzo è in grado di andare oltre il suo genere. Il tema principale dei dipinti di Anna sono le leggende e miti della Antica Grecia. Diversi dipinti e disegni di Anna si trovano in diverse collezioni private in Europa, Stati Uniti, Emirati Arabi. L'artista ha tenuto più di 30 mostre personali – nel Museo Teatrale dello Stato Russo, al Festival Internazionale delle Arti a nome di Bosco di Ciliegi, a Parigi nel Espace Pierre Cardin. Ci sono varie interviste e articoli sull'attività professionale di Anna pubblicati nelle riviste così come Vouge, Elle, Cosmopolitan, Fashion TV e riviste professionali sull'arte. Inoltre ha pubblicato numerosi album da lei illustrati.

Il portfolio individuale dell'artista è internazionale e le sue opere sono una sintesi delle arti visive.

## At the crossroad of genres

Anna Nezhnaya is the artist, who implement her projects in different genres – painting and graphics, theatrical costumes and stage scenery, show and circus, design and polygraphy.

She is the main artist of the project “Les Saisons Russes”, dedicated to the famous union “World of Art” and “Russian Ballets”. The opening night took place in 1993 on the stage of The Mariinsky Theatre in San-Petersburg and has been show in Champs Elysees Theater in Paris, Palais des Festivals de Cannes in France, London’s Coliseum Theater. Also this performance has been produced on the stage of Teatro dell’Opera di Roma with Carla Fracci.

Anna has been awarded a Serge Diaghilev Order “For contribution to the culture” and is a prizewinner of the national professional award “SHOWTEX”.

Opera and ballet performances, concerts and shows, public and private holidays, circus performances are decorated on the stages in many theaters, concert halls, hotels and stadiums both in Russia and Europe. She is preparing set, costumes and video for the opera legends Galina Vishnevskaya, Montserrat Caballe, prima ballerina etoile of Teatro alla Scala Svetlana Zakharova, ballet stars of The Bolshoi Theatre, classical singer Ljuba Kazarnovskaya, English choreographer Wayne Eagling, Rudolf Nuriyev Ballet Festival and Shalyapin Opera Festival. Also some popular Italian singers, such as Al Bano and “Ricchi e Poveri” performed their shows at her scenery. Anna is establishing design projects for many world famous companies and department stores: Bosco di Ciliegi, Mercury, Lladro, Cartier, Blue Elephant, The Ritz Carlton, Land Rover, Fiat.

The artist’s creative credo is that ideas can live even after finishing the work on performances and each sketch is able to exceed the limits of the genre. The subject of Anna`s pictorial works is the legends and myths of Ancient Greece. Anna`s works are kept in private collections in Europe, the USA and the UAE. She has been held over 30 personal exhibitions - in The Bahrushin State Theatrical Museum in Moscow, at the international Bosco di Ciliegi Arts Festival, in The Parisian Espace Pierre Cardin. There are articles and interview in such editions as Vogue, Elle, Cosmopolitan, Fashion TV and professional art magazines. There have also been published many illustrated albums.

Individual artist’s palette is international, and the works are a synthesis of Visual Arts.

Anna Nezhnaya, the artist  
**Theatre - set design and costumes**







**«Romeo and Juliet»  
Prokofiev**







Нежна.О

Anna Nezhnaya – Theatre Show Design Painting Graphics



**«La Bayadere»  
Minkus**



Anna Nezhnaya— Theatre Show Design & Stage Graphics

Hexhal  
ANNA NEZHAYA



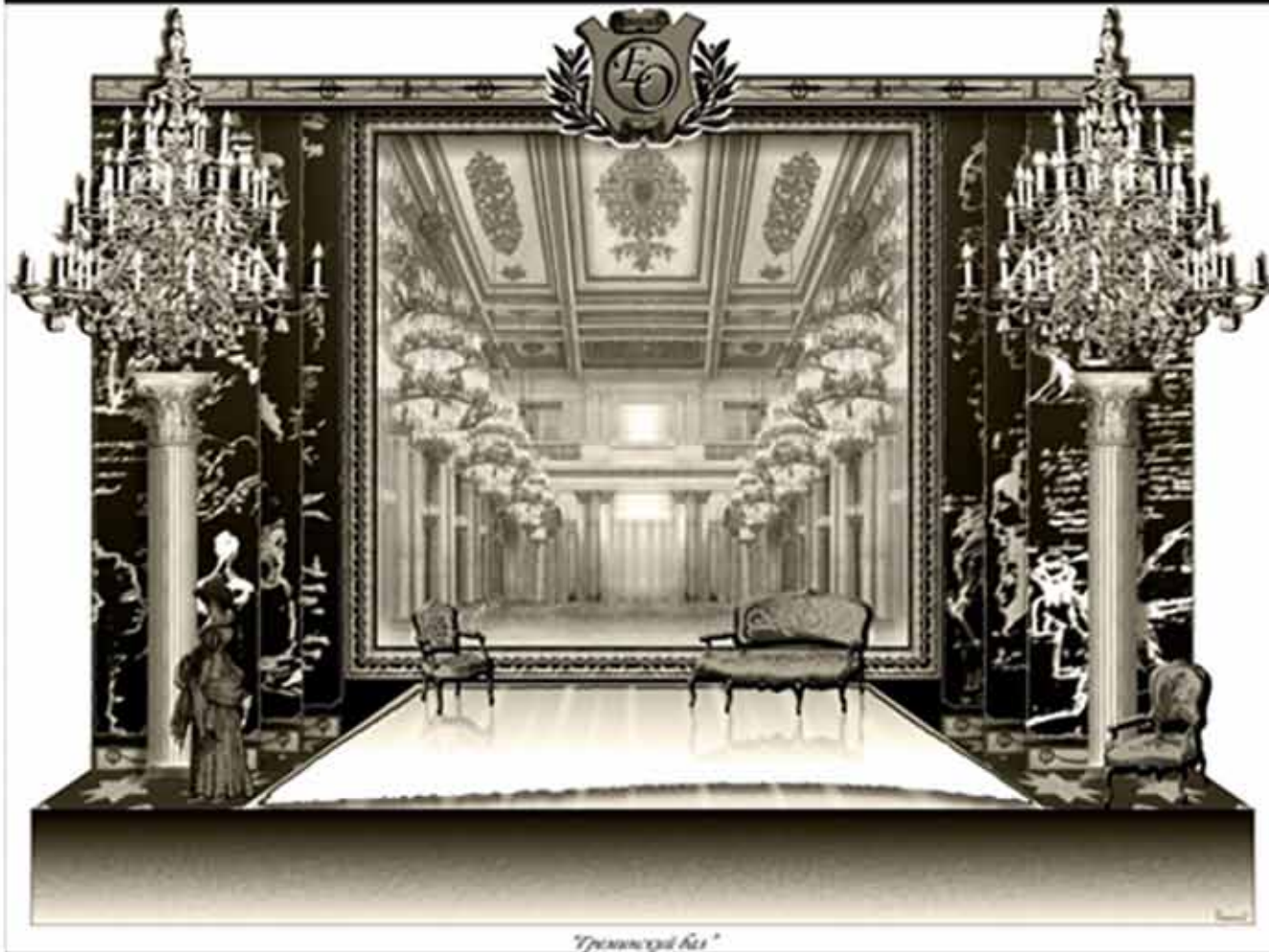


Anna Nezhnaya – Theatre Show Design Painting Graphics



**«The Nutcracker»  
Tchaikovsky**





*"Триумф Лизы"*

**«Eugene Onegin»  
Tchaikovsky**







**«Scheherazade»  
«Les Saisons Russes» of Sergei Diaghilev**





**«Polovtsian Dancers»**

**Borodin**

LES  
SAISONS  
RUSSES

Anna Nezhnaya – Theatre Show Design Painting Graphics





«The Afternoon of a Faun»  
«Les Saisons Russes» of Sergei Diaghilev



Anna Nezhnaya Theatre Show Design Painting Graphics



LES SAISONS RUSSES





Anna Nezhnaya – Theatre Show Design Painting Graphics





«The Firebird»

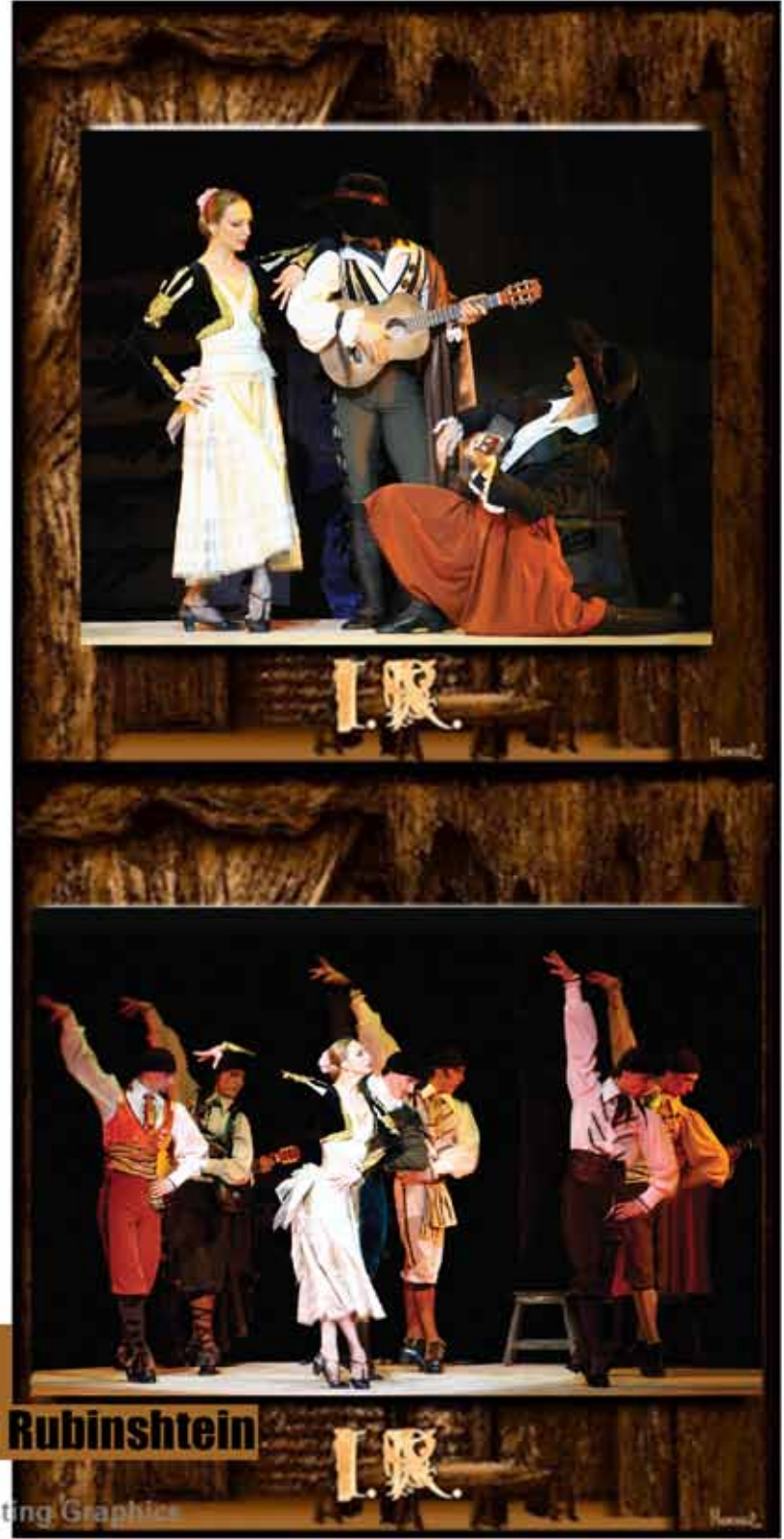
«Les Saisons Russes» of Sergei Diaghilev





**«Bolero»**  
**Dance company of Ida Rubinshtein**

Anna Nezhnaya – Theatre Show Design Painting Graphics







«Le Pavillon d'Armide»  
«Les Saisons Russes» of Sergei Diaghilev





«Blue God»

«Les Saisons Russes» of Sergei Diaghilev





«Carmen»  
Biset



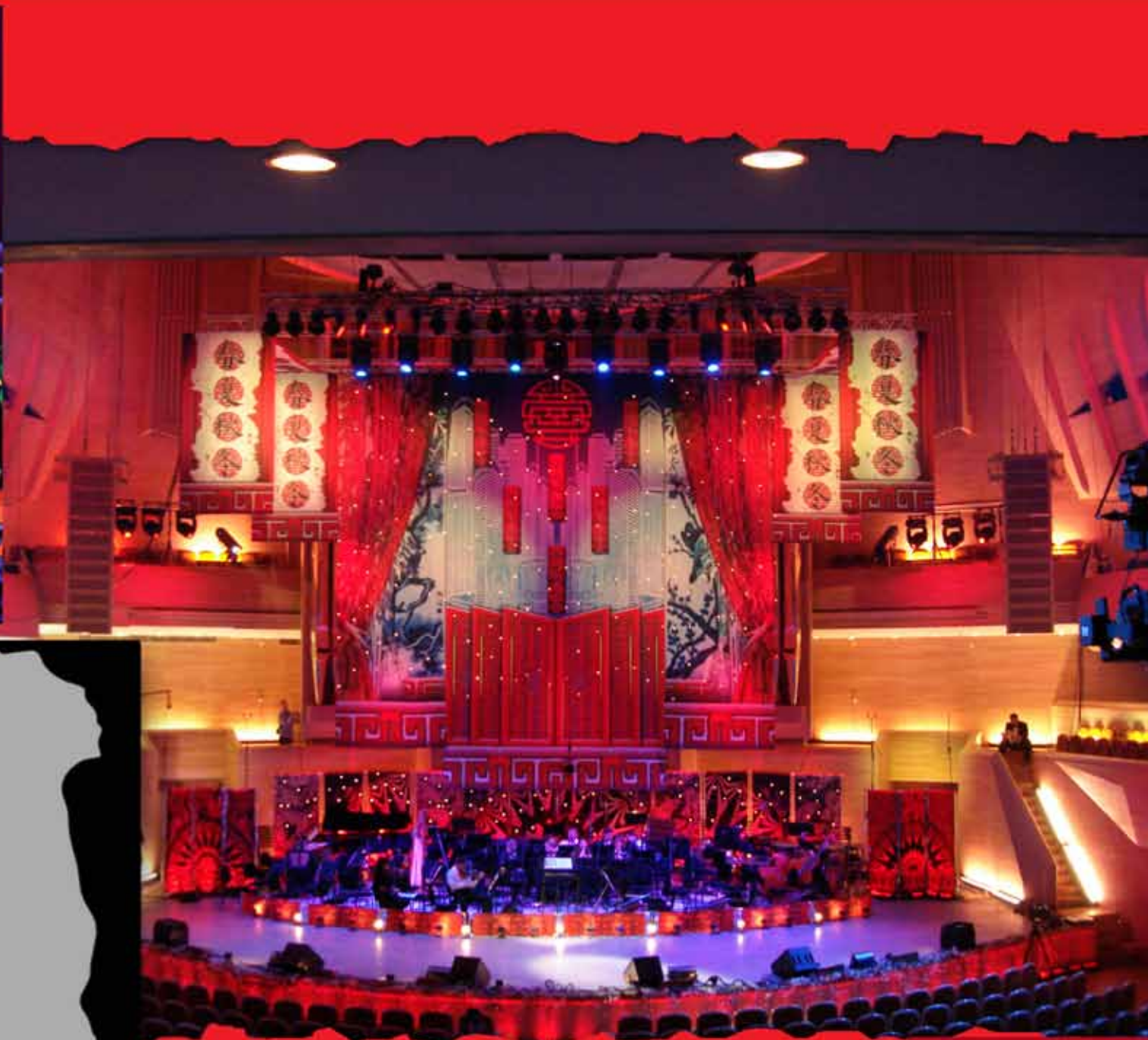


«Carmen»  
Biset



Нежная  
ANNA





Anna Nezhnaya – Theatre Show Design Painting Graphics

«Mefistofele»  
Arrigo Boito

Ljuba Kazarnovskaya as Elena





«Rhapsody on the Theme of Paganini»

Rachmaninoff

Anna Nezhnaya - Theatre Show Design Painting Graphics





**«The Oscar Schlemmer Museum»**





«Japan»  
Taiko





**«The Princess and the Pea»  
Vivaldi Corelli**



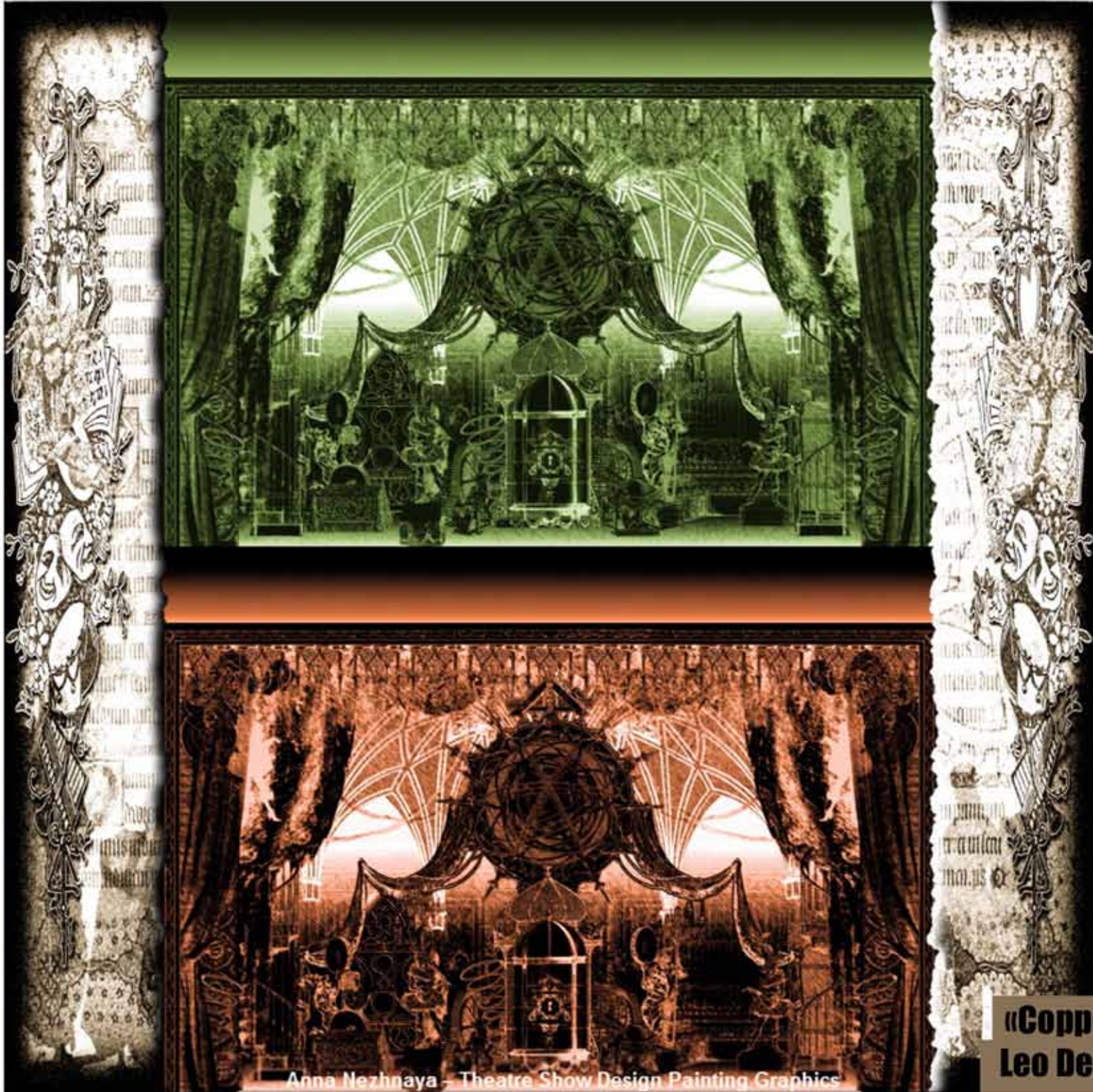




**«Coppelia»  
Leo Delibes**







Anna Nezhnaya - Theatre Show Design Painting Graphics

**«Coppelia»  
Leo Delibes**



Anna Nezhnaya, the artist  
**Show - set design, costumes, video**







## High-Tech Show

Anna Nezhnaya – Theatre Show Design Painting Graphics





Anna Nezhnaya – Theatre Show Design Painting Graphics





Anna Nezhnaya – Theatre Show Design Painting Graphics





**Variety show**  
**Ethno Pop**

Anna Nezhnaya - Theatre Show Design Painting Graphics









Set&Video - Anna Nezhnaya



**Gala concert with orchestra**

Anna Nezhnaya – Theatre Show Design Painting Graphics





Anna Nezhnaya – Theatre Show Design Painting Graphics

**Gala concert  
Beijing**





Anna Nezhnaya – Theatre Show Design Painting Graphics





Anna Nezhnaya – Theatre Show Design Painting Graphics

**Show&Gala concerts**

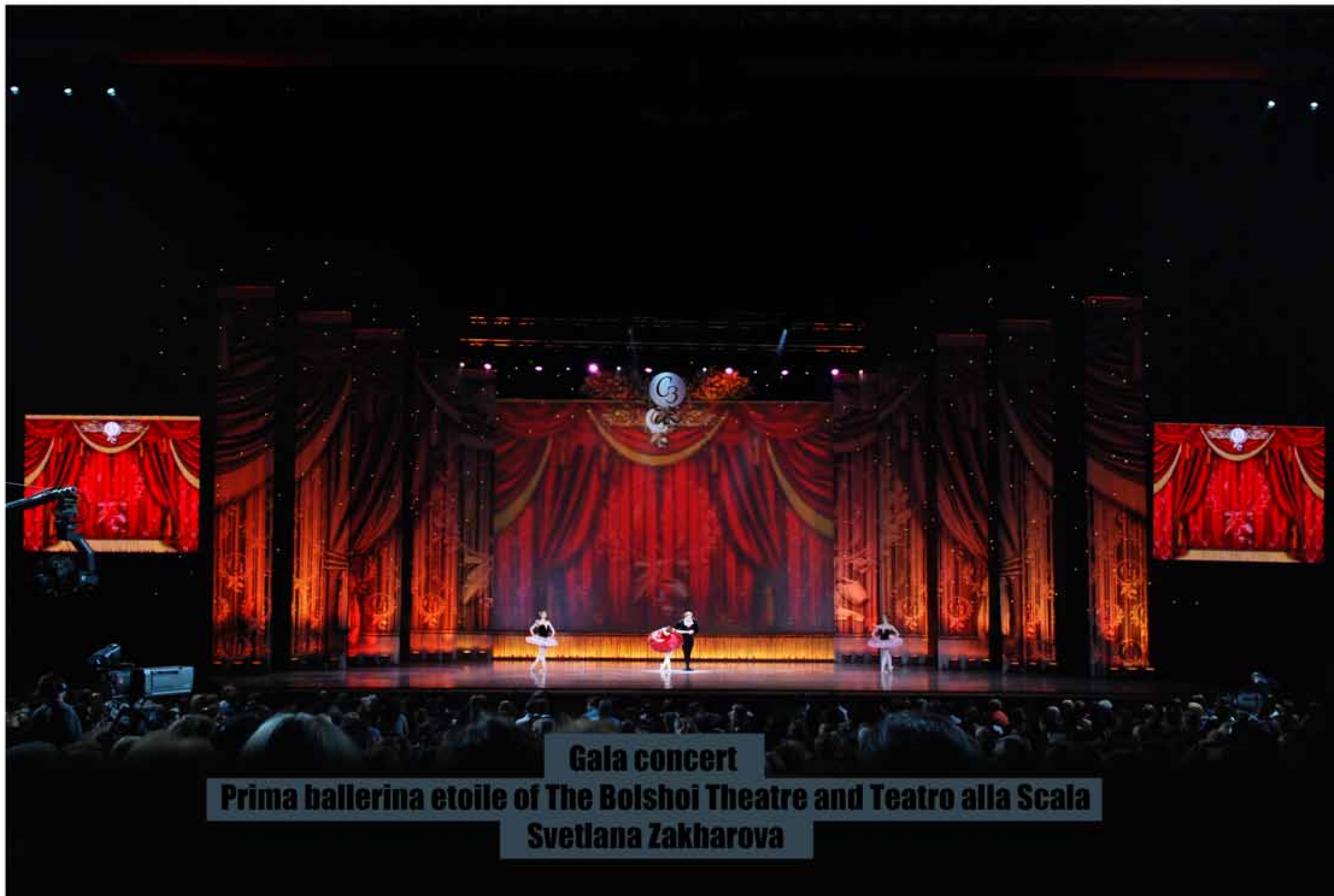




**Gala concert  
Rome in Moscow**







**Gala concert**

**Prima ballerina etoile of The Bolshoi Theatre and Teatro alla Scala**

**Svetlana Zakharova**





Anna Nezhnaya – Theatre Show Design Painting Graphics





Anna Nezhnaya – Theatre Show Design Painting Graphics





Нежна.е

**Montserrat Caballe**  
**Gala concert with orchestra**



Anna Nezhnaya - Theatre Show Design Painting Graphics





Anna Nezhnaya – Theatre Show Design Painting Graphics





**Gala concert with orchestra**

Anna Nezhnaya – Theatre Show Design Painting Graphics





Anna Nezhnaya – Theatre Show Design Painting Graphics





**Circus&pop show**





**Pop show**









**Concert with orchestra**

*Нежна.О*



Anna Nezhnaya, the artist  
**Events - presentation, weddings, anniversaries**







Anna Nezhnaya – Theatre Show Design Painting Graphics





Anna Nezhnaya – Theatre Show Design Painting Graphics



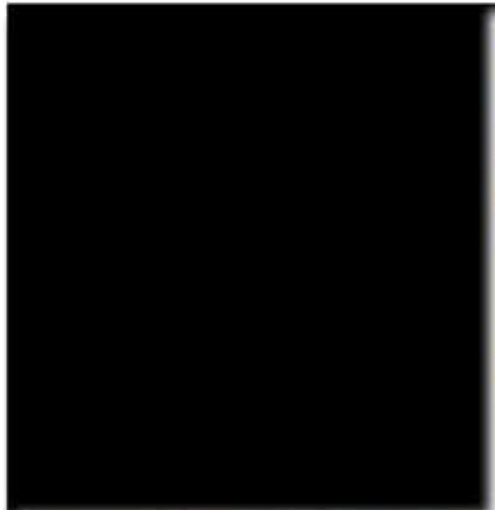






Анна Ножина - Creative Show-Design Painting Graphics

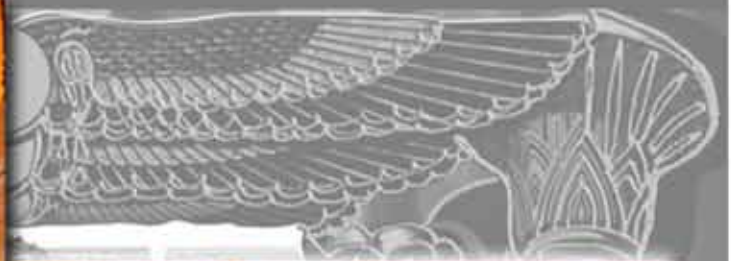




**Sport&Dance  
London Body School**







Anna Nezhnaya – Theatre Show Design Painting Graphics

Нежна.О  
ART & DESIGN





**Private event  
The Ritz Carlton**



Anna Nezhnaya – Theatre Show Design Painting Graphics





Anna Nezhnaya | The Store Show Design Painting Graphics









**Christmas decoration  
Mercury & Barvikha Luxury Village**





**Show&videoconferencing  
Red Square - Trafalgar Square**



Anna Nezhnaya, the artist  
**Personal exhibitions**





В П Е Ч А Т Л Я Ю Т







Булга & Шингел  
FAMILY



ССТВ

ОВ.



СЕ

КР

15

Е

У

/

А





С Е

К Р



С Е

К Р

15

В

Х

/Г

А

Anna Rezhnaya – Theatre Show Design Painting Graphics





Anna Nezhnaya – Theatre Show Design Painting





Anna Nezhnaya – Theatre Show Design Painting Graphics



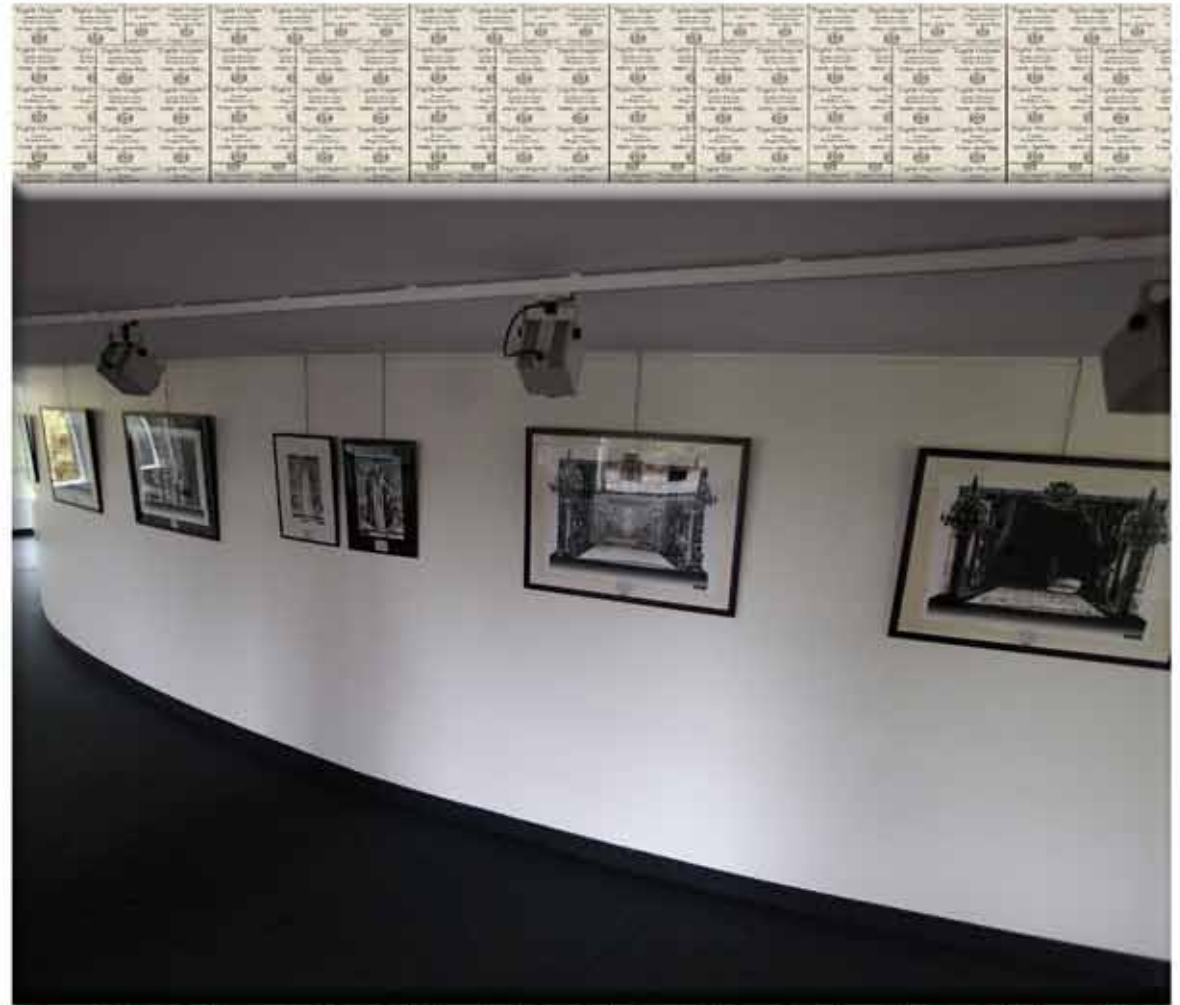


**Dolph's Gallery and Cafe des Artistes**









**Espace Pierre Cardin**





Anna Nezhnaya – Theatre Show Design Painting Graphic



Anna Nezhnaya, the artist  
**Art - paintings and panno**



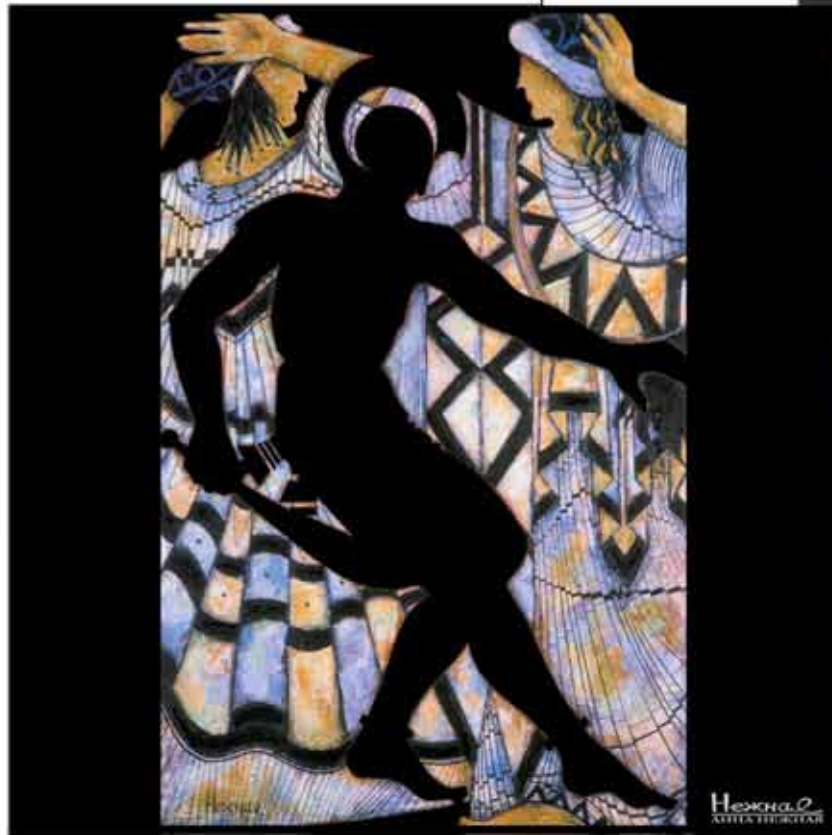




Anna Nezhnaya – Theatre Show Design Painting Graphics

**Heracles**





**Orest**

Anna Nezhnaya – Theatre Show Design Painting Graphics

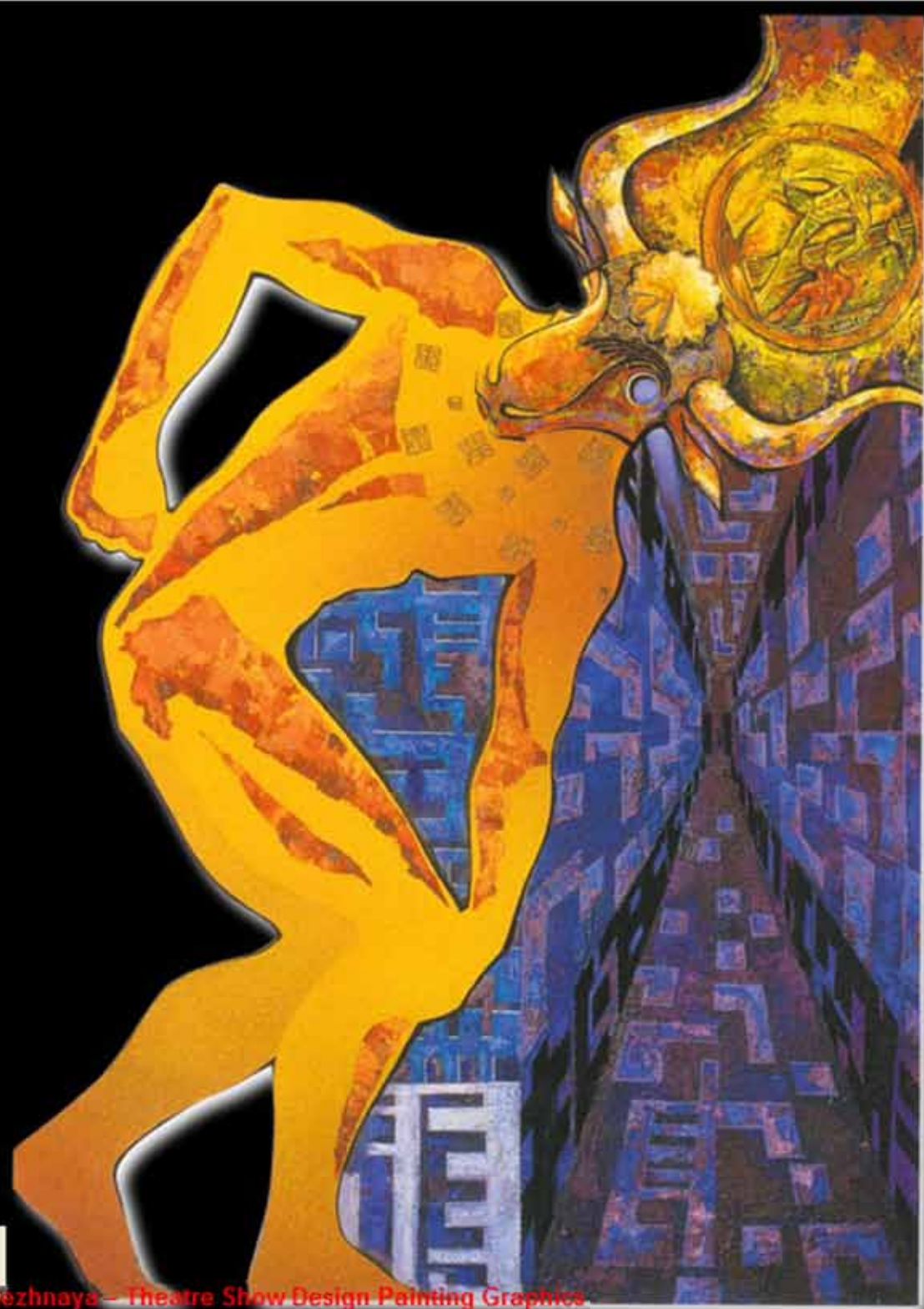




**Athene and Marcius**

Anna Nezhnaya - Theatre Show Design Painting Graphics





**Minotaurus**





**Oedipus and Sphinx**

Hezhal  
ARTIST SIGNATURE